

ENERGY SAVING PANELS.



© **Shaping the eco-friendly future of Global Construction.**

Address :

Northeast corner of intersection of Jinsui Avenue and Xin'er Street, Hongmen Town, Xinxiang City, Henan Province. Room 1210, 12th Floor, Jingye Cross-border Trade Building.

Web :

www.cnarchi.com

<https://cnarchi.en.alibaba.com/>

P.C. : 453000

Tel : +86 19838158196

Email : ArchiLucky@163.com

WhatsApp : +86 19838158196

Contents



➤ Company



➤ Products

- 03** Enterprise Profile
- 05** Technical Strength
- 07** Qualification Honor

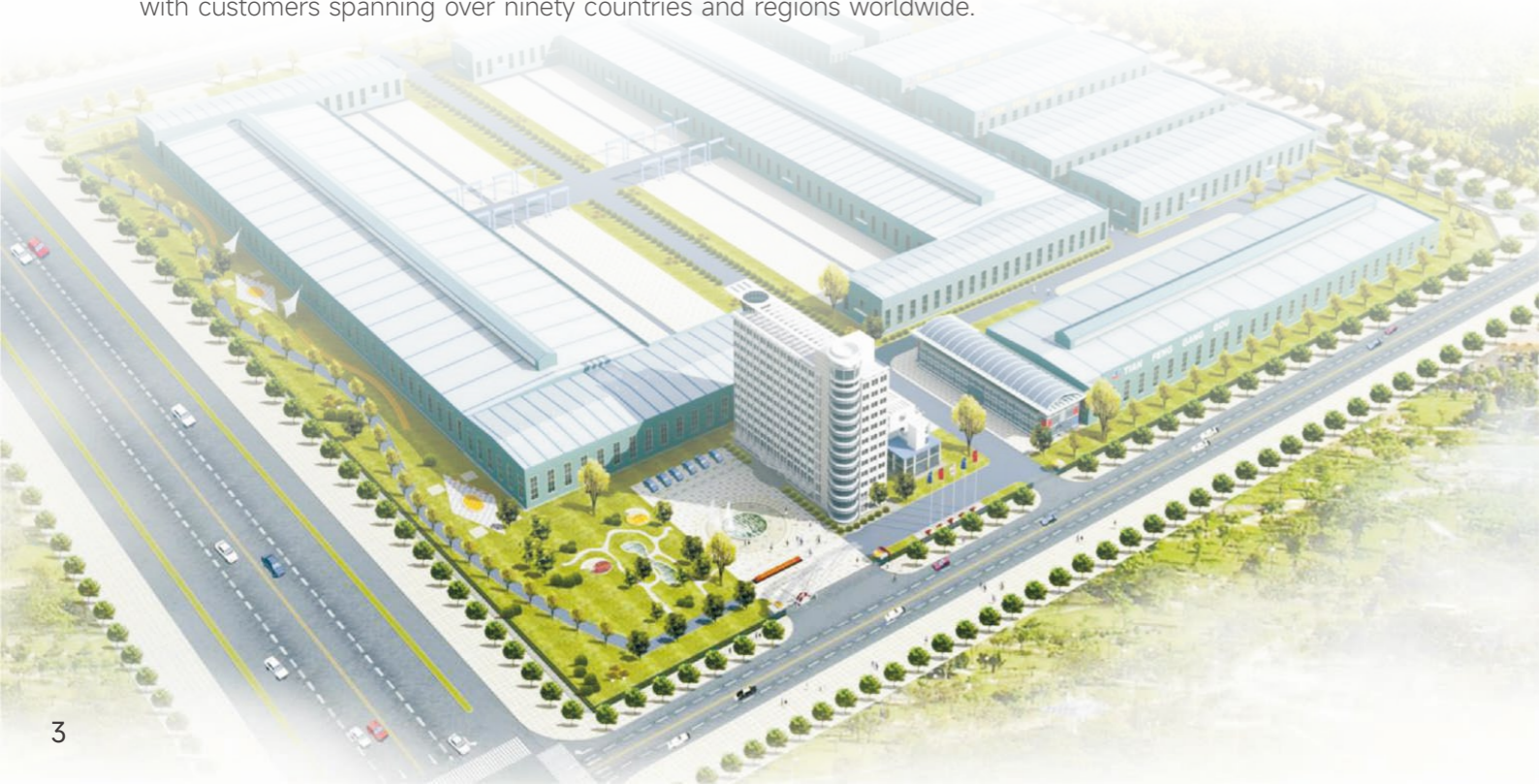
- 09** Building Envelope System
- 27** Boutique case

GROUP PROFILE

Henan Archi, founded in 1997, is a high-tech enterprise specializing in the design, research and development, production, and sales of green energy-saving panels. Since then, we have focused on the field of building curtain wall engineering design and the construction of exterior wall thermal insulation engineering, while also engaging in other related areas of building construction.

Our products include advanced and high-strength polyurethane (pu) sandwich panels, rock wool sandwich panels, glass wool sandwich panels, and other new building materials. Beyond that, we specialize in providing eco-friendly container houses, steel structures, light steel villas, and prefabricated houses, etc.

Henan Archi has a factory area of over 30,000 square meters with a total investment of 68 million yuan and currently employs 256 staff. The company has introduced world-leading continuous production lines for polyurethane (pu) energy-saving panels and rock wool board production equipment. It boasts professional research and development innovation teams in multiple fields, has established a provincial enterprise technology center and a scientific research platform for energy-saving panels and integrated housing engineering technology in Henan Province, and possesses multiple key laboratories. Archi has applied for over 120 invention patents, and in 2014, Archi obtained the EU CE certification, ISO 9001, ISO 14001, ISO 45001. Currently, Archi has completed cooperation projects with multiple key universities and enterprises, with customers spanning over ninety countries and regions worldwide.



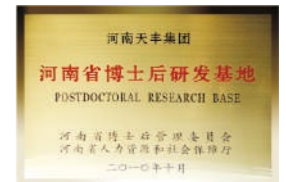
TECHNICAL STRENGTH



Archi focus on enterprise technological innovation capability, is an innovatve enterprise in Henan province, professional research and development innovation team have more than one field, established a provincial enterprise technology center and energy-saving panels and integrated building engineering technology research center in Henan province of scientific research platform, and the Chinese architectural design institute, Tongji university, Tianjin university, Zhengzhou university, Henan normal university and other research institutes and universities established long-term producton, study and research of the strategic cooperative relations. We were applied for 120 national patents, invention patents authorization 23, and participated in many national and industry standards.



We always focus on green building and energy saving.

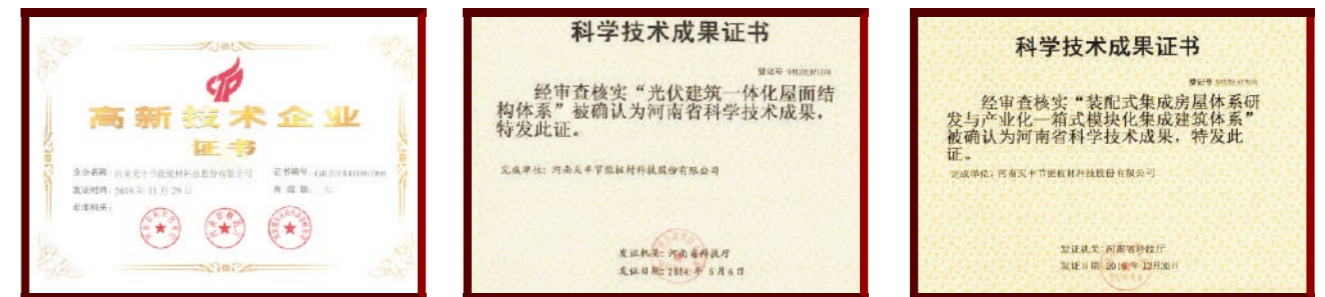


Reference Standard

- The green building evaluation standard (GB50378-2014)
- The construction metal surface thermal insulation sandwich panel (GB/T23932-2009)
- The rigid polyurethane composite insulation panel (JB/T314-2012)
- The hard foam polyurethane panel thin plastering exterior insulation system material (JB/T420-2013)
- Technical specification modular construction site facilities
- Container type light steel structure moving house
- The construction metal surface structural design of thermal insulation sandwich panel

QUALIFICATION HONOR

The company has been certified by the international quality management system, environmental management system and occupational health and safety management system. It has been named as China's Green Panel Industry's most influential brand enterprises, Henan innovative enterprises, the first batch of Henan energy-saving emission reduction demonstration unit, "Xinxiang Mayor Quality Award" enterprises. It developed the TF-PUR series flame retardant insulation sandwich panel and "the research and application of new energy saving and high flame retardant wall panel(EPC), "container modular integrated building system" and a number of research results has the achievements by province office organization of scientific and technological, and has won a number of national and provincial science and technology progress award, Henan Province brand-name products, Henan province famous trademark, and the construction of New Technology Promotion Award certificate in Henan province.



BUILDING ENVELOPE SYSTEM

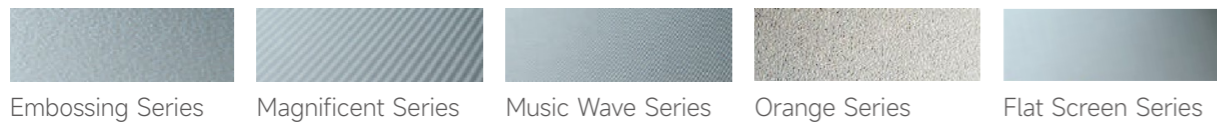
Wall Envelope System

Archi Pir sandwich panel / glass wool panel / rock wool panel series

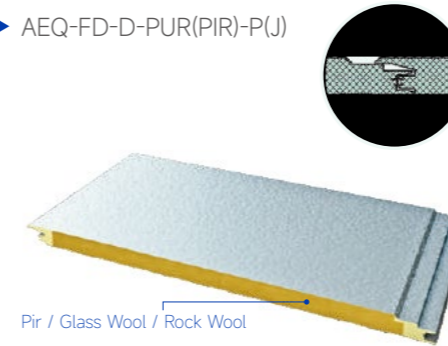
Product Specification

Facing Effect	Super Plain / Embossing / Orange Peel / Magnificent / Music Wave			
Specification (mm)	Standard Panel Width	1000		
	Optional Panel Length	800-1000		
	Panel Length	$2000 \leq L \leq 15000$		
	Exposed Panel Length	$800 \leq L \leq 8000$		
Thickness (mm)	Standard Panel Thickness	50 / 80 / 100		
	Optional Panel Thickness	45 / 60 / 75 / 125		
	Outer Steel Sheet	0.5-0.8		
	Inner Steel Sheet	0.4-0.5		
Steel Sheet Coating	PVDF / Hi Resistant PE / Silicon Modified PE / PE (Coating Thickness $\geq 20\mu\text{m}$)			
Core Material	Rockwool	Glass Fiber	pu	pir
Core Average Density (kg/m³)	120	64	42	48
Core Heat Conduct Index (w/m.k)	0.042	0.04	0.022	0.022

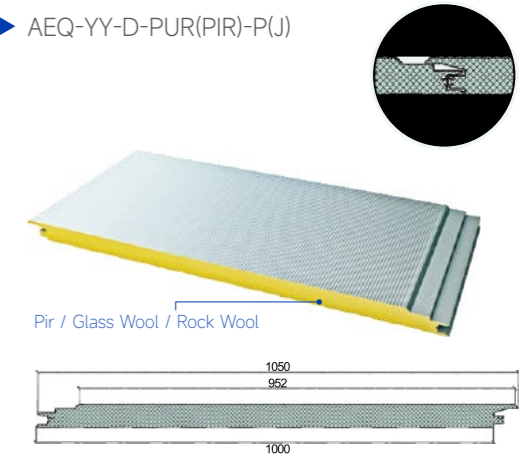
Different Facing



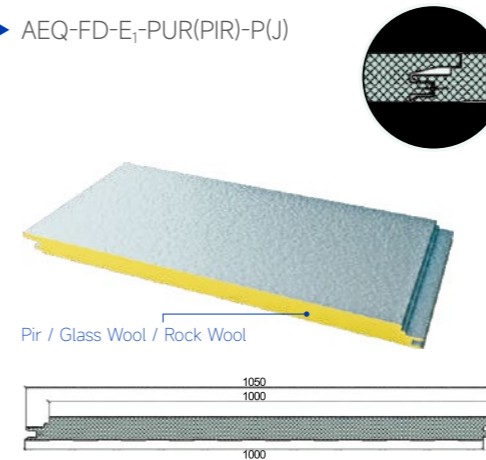
▶ AEQ-FD-D-PUR(PIR)-P(J)



▶ AEQ-YY-D-PUR(PIR)-P(J)



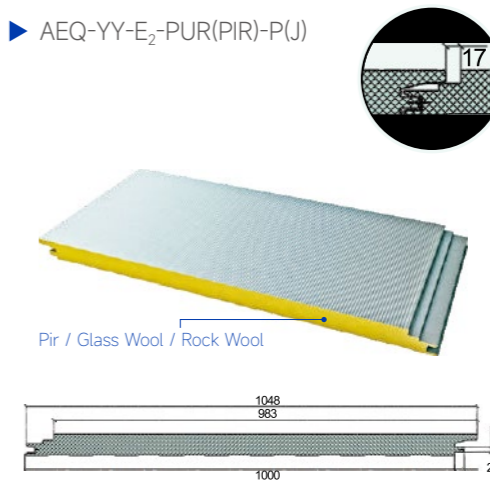
▶ AEQ-FD-E₁-PUR(PIR)-P(J)



▶ AEQ-LW-E₁-PUR(PIR)-P(J)



▶ AEQ-YY-E₂-PUR(PIR)-P(J)



Archi Metal Curtain Wall Panel Enclosure System

GLASS CURTAIN WALL PANEL

The panel of Archi glass curtain wall adopts high-strength tempered glass, which has many advantages: it has high mechanical strength, and a 6mm-thick tempered glass can withstand the impact of a 227g steel ball falling from a height of 2.5 meters. The sandwich panel uses rock wool board or polyurethane board with high heat insulation and fire resistance, the sealing edge adopts wear-resistant aluminum alloy profiles, and the inner lining adopts galvalume steel sheet.

As an innovative product of Archi Energy Saving Company, the high-strength glass curtain wall panel has achieved remarkable results after being applied to multiple buildings, attracting great attention from industry insiders and becoming the first choice to replace high-tech imported glass curtain wall panels.

Product Features

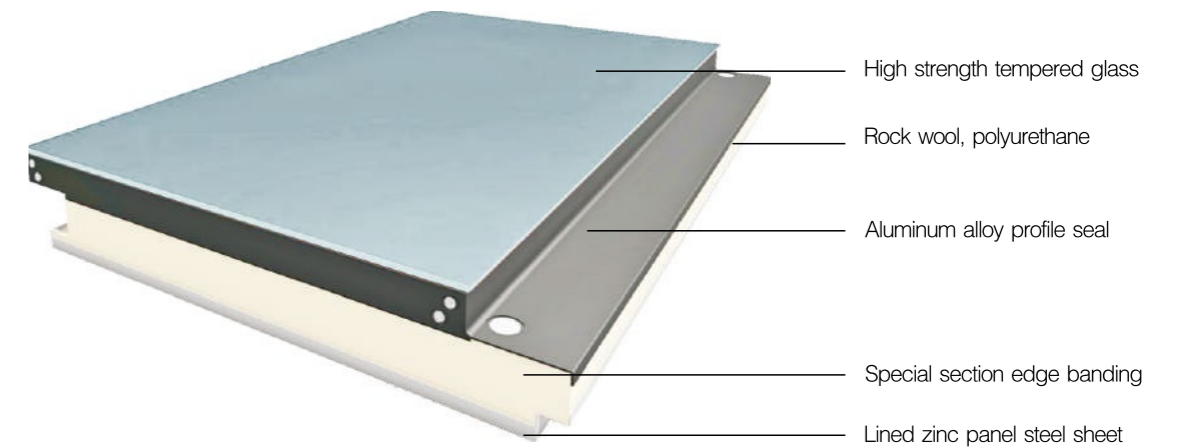
The glass curtain wall is a new type of modern wall that best embodies the organic unity of architectural aesthetics, building function, building energy efficiency, and building structure. It presents different colors from various angles, exhibiting a dynamic beauty that changes with the sun, moon, and light.

It is made of colored transparent panel glass. It can absorb infrared rays, reduce the solar radiation entering the room, and lower the indoor temperature. It can reflect light as well as transmit light like glass.

Sound insulation, waterproof, frost-resistant, moisture-proof, and wind-resistant.

Product Specification

Specification (mm)	Panel length	500 ≤ L ≤ 3600
Thickness (mm)	Panel Thickness	50/75/100
Panel Modulus (mm)		500/800/900/1000
Surface Treatment		Smooth, Matte, Matte Surface
Surface Material		High Strength Tempered Glass
Core Material		Rock Wool, Polyurethane
Lining Material		Galvanized Steel Sheet
U Value (w/m ² k)		0.44



METAL CURTAIN WALL PANEL

© Product Specification

Facing Effect	Super Plain / Embossing / Orange Peel / Magnificent / Music Wave			
Specification (mm)	Standard Panel Width	1000		
	Optional Panel Length	800-1000		
	Panel Length	2000 ≤ L ≤ 15000		
Thickness (mm)	Panel Thickness	50 / 75 / 80 / 100		
	Outer Steel Sheet	0.5-0.8		
	Inner Steel Sheet	0.4-0.5		
Panel Material	Copper Panel / Steel Panel / Aluminum Panel / Titanium Zinc Panel			
Steel Sheet Coating	PVDF / Hi Resistant PE / Silicon Modified PE / PE (Coating Thickness ≥ 20µm)			
Core Material	Rockwool	Glass Fiber	PU	PIR
Core Average Density (kg/m ³)	120	64	42	48
Core Heat Conduct Index (w/m.k)	0.042	0.04	0.022	0.022

© Different Facing

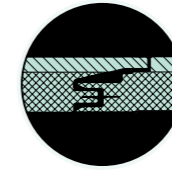


AEQ-FD-MQ-PUR(PIR)-P(J)

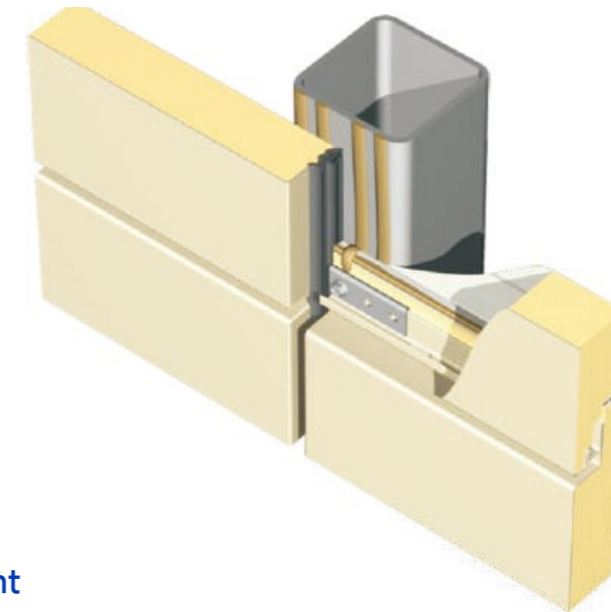
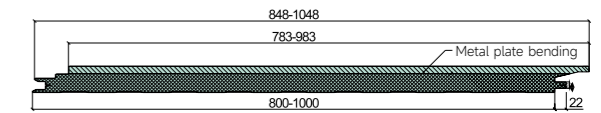
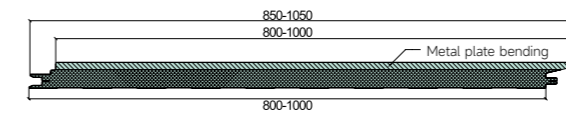
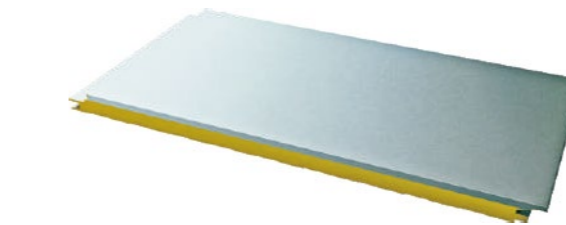
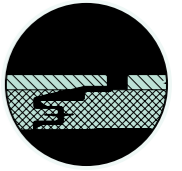
AEQ-CP-MQ-PUR(PIR)-P(J)

AEQ-JW-MQ-PUR(PIR)-P(J)

▶ AEQ-CP-MQ₁-PUR(PIR)-P(J)



▶ AEQ-FD-MQ₂-PUR(PIR)-P(J)



• Variable Slab Joint

Available seam width variations range from 4mm to 150mm; Variable thickness.

• Variable Thickness

The panels' thickness, ranging from 50mm to 150mm, is based on the same buckle form and can be matched with each other to accentuate the building's three-dimensional appearance.

• Variable Panel Type

Different types of facade panels can be freely assembled to enhance the sense of solid and hollow, and to maximize the proportion of finishes, so as to meet the design requirements.



① Metal Curtain Wall Panel Joints



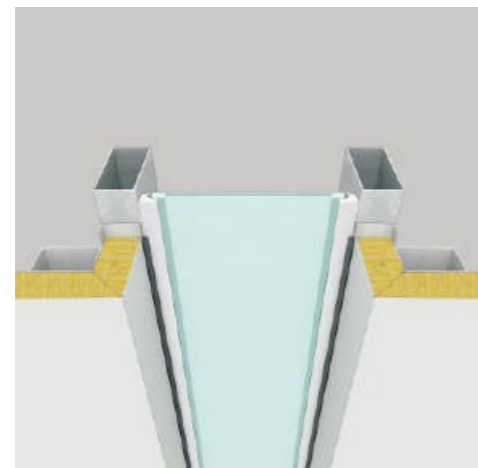
② Metal Curtain Wall Panel Bottom Joints



③ Metal Curtain Wall Panel Bottom Joints



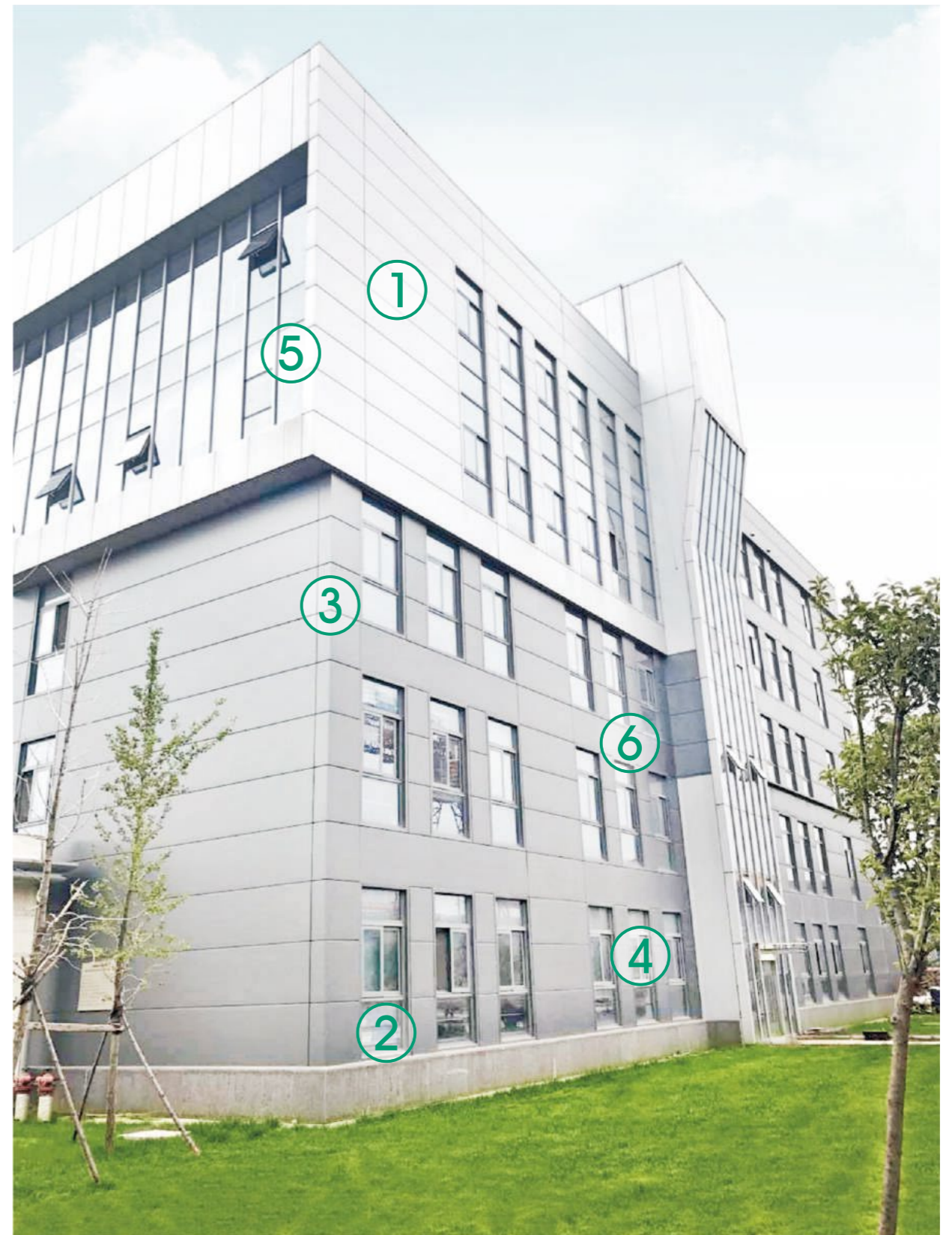
④ Metal Curtain Wall Panel And Window Side Joint 1



⑤ Metal Curtain Wall Panel And Window Side Joint 2



⑥ Metal Curtain Wall Panel Window Upper And Lower Joints



Archi Roof Enclosure System

A TYPE PANEL SERIES

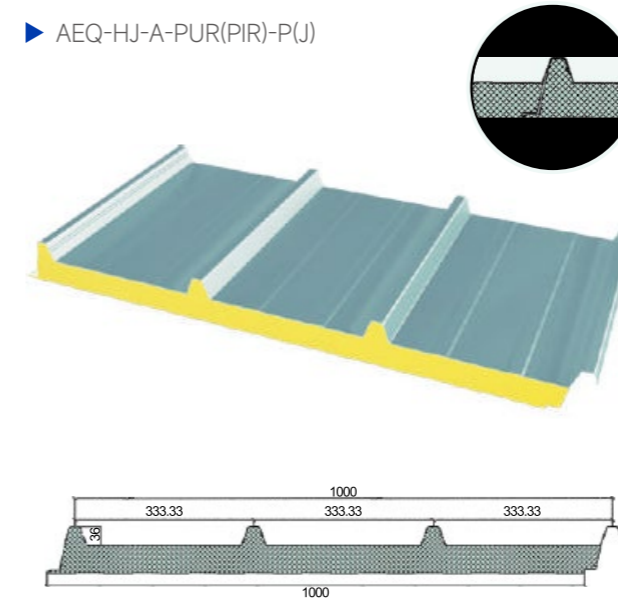
Product Features

·Energy-saving effect is superior	·High capacity, increasing the purlin spacing
·The groove type close overlapping, specially made waterproof cap, to avoid leaking phenomenon	·Quick installation and shorten construction period of roof

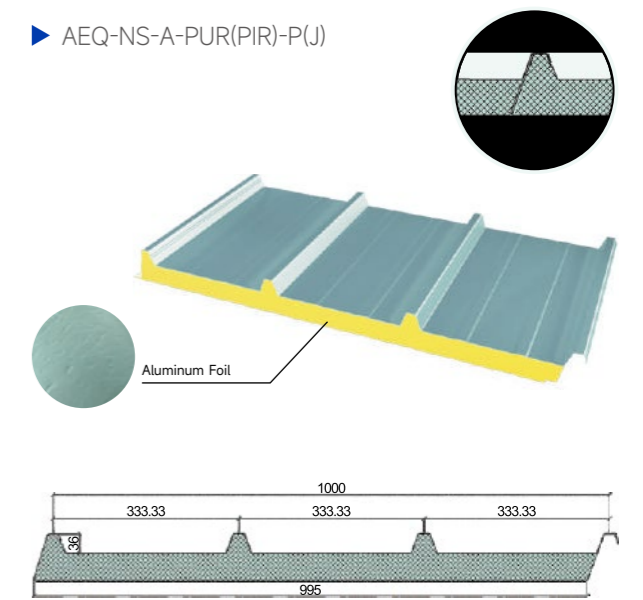
Product Specification

Specification (mm)	Standard Panel Width	1000			
	Panel Length	2000 ≤ L ≤ 15000			
Thickness (mm)	Standard Panel Thickness	45 / 50 / 60 / 75 / 80 / 100			
	Outer Steel Sheet	0.4-0.8			
	Inner Steel Sheet	0.4-0.8			
Steel Sheet Coating	PVDF / Hi Resistant PE / Silicon Modified PE / PE (Coating Thickness ≥ 20μm)				
Core Material	Rockwool	Glass Fiber	PU	PIR	
Core Average Density (kg/m ³)	120	64	42	48	
Core Heat Conduct Index (w/m.k)	0.042	0.04	0.022	0.022	

▶ AEQ-HJ-A-PUR(PIR)-P(J)



▶ AEQ-NS-A-PUR(PIR)-P(J)



• Roof Waterproof Cap

The roof waterproof cap, customized with polyurethane, not only possesses high impact strength, excellent thermal stability, creep resistance, electrical insulation, but also demonstrates good flame retardancy.

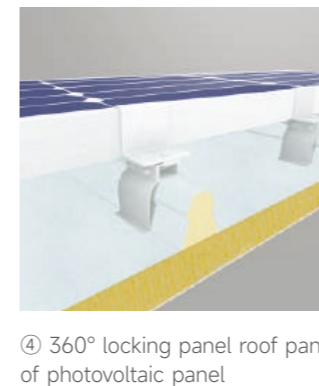
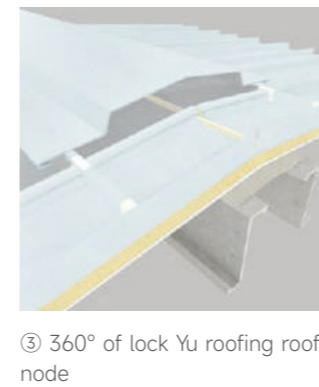
ARCHI YU PANEL

© Product Features

<p>The use of rock wool composite panels for roofing provides remarkable heat preservation and energy-saving effects, along with fire prevention capabilities.</p>	<p>The roof panel employs a combination of a large wave peak and reinforcing rib, coupled with rigid polyurethane foam and an integrated design of photovoltaic panels, significantly enhancing the bearing capacity of the roof system.</p>
<p>The special wave crest shape of the roof panel can be directly connected and locked with fasteners, featuring an on-line gluing design, a hidden nail design, and primary waterproofing and anti-condensation properties.</p>	<p>Products and accessories standardization, installation simple and fast, 100% environmental protection, can be recycled.</p>

© Product Specification

<p>Specification (mm)</p>	<p>Panel length</p>	<p>500 ≤ L ≤ 3600</p>
<p>Thickness (mm)</p>	<p>Panel Thickness</p>	<p>50/75/100</p>
<p>Panel Modulus (mm)</p>	<p>500/800/900/1000</p>	
<p>Surface Treatment</p>	<p>Smooth, Matte, Matte Surface</p>	
<p>Surface Material</p>	<p>High Strength Tempered Glass</p>	
<p>Core Material</p>	<p>Rock Wool, Polyurethane</p>	
<p>Lining Material</p>	<p>Galvanized Steel Sheet</p>	
<p>U Value (w/m²k)</p>	<p>0.44</p>	



Archi Thermal Insulation Decoration Panel

Archi panel (polyurethane DGJ) is a continuously produced composite panel material manufactured in a factory, utilizing polyurethane foam as the thermal insulation layer, and reinforced with a coil-enhanced interface layer. The Archi panel (polyurethane DGJ) is suitable for various types of civil exterior insulation applications.

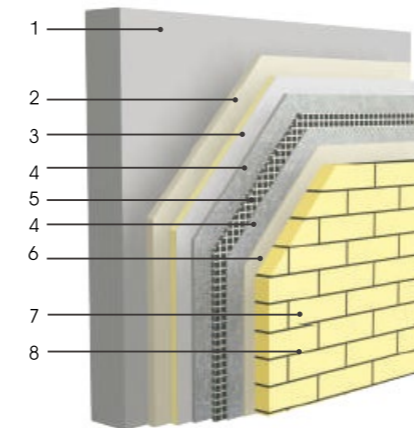
Product Specification

Specification (mm)	Standard Panel Length	400
	Panel Length	1200
Thickness(mm)	Panel Thickness	30-120
Inside And Outside Panel Material	Glass Cement Paste	
Core Material	PU	PIR
Core Average Density (kg/m ³)	42	48
Core Heat Conduct Index (w/m.k)	0.022	

Different Finishes

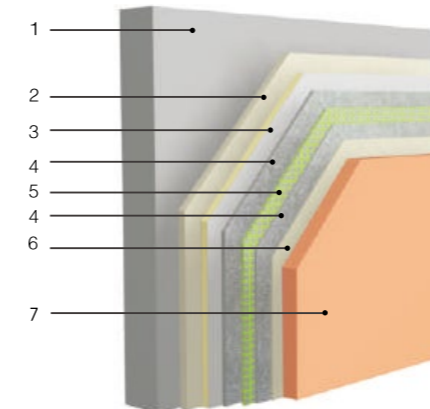


Face Brick Facing System

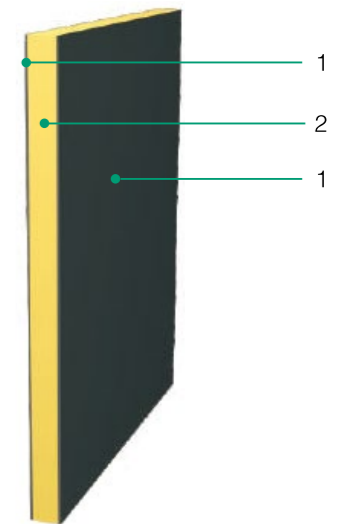


- 1- Base wall
- 2- Adhesive
- 3- AEQ insulation panel
- 4- Plastering adhesive
- 5- Alkali resistant fiberglass mesh cloth
- 6- Brick adhesive
- 7- Face bricks
- 8- Brick Pointing Agent

Paint Facing System



- 1- Base wall
- 2- Adhesive
- 3- AEQ insulation panel
- 4- Plastering adhesive
- 5- Alkali resistant fiberglass mesh cloth
- 6- Flexible waterproof putty
- 7- Coatings



- 1-Reinforced Roll Material
- 2-Polyurethane Hard Foam

Archi Yo Panel

Product Introduction

The Archi Yo panel is a lightweight, fire-resistant, and thermally insulated decorative integrated panel specifically designed and developed by our company for the renovation of old factory buildings, various exterior thermal insulation decorations, and indoor insulation ceiling designs. The exterior panel of this product is a color-coated steel panel or aluminum panel with various finishes, while the core material is rock wool, providing fire protection and thermal insulation. Depending on the application requirements, the inner panel can be a color-coated steel panel or aluminum foil. The production process utilizes an automatic continuous production line, ensuring stable product quality.

Product Features



A-Level Fire Prevention

Using rock wool as the core material can meet the A-level fire protection requirements.



Thermal Insulation And Sound Insulation

Rock wool core material has both insulation and sound insulation properties, meeting various building needs.



Beautiful And Fashionable

The decorative pattern on the exterior is simple, fashionable, and highly expressive and infectious.



One Board For Multiple Purposes

Can be used as exterior wall decorative panels, interior wall decorative panels, ceiling panels, etc.



Lightweight And Easy To Install

The product has a standard width of 360mm, a thickness of 30mm, and a slim board shape of 5, making it easy to transport and install.



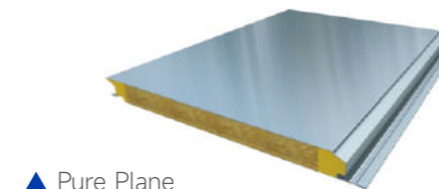
Economically Practical

Compared with other types of sandwich panel products, Yoban products have high cost-effectiveness, convenient transportation and installation, high construction efficiency, and low cost, making them an economical type of panel.

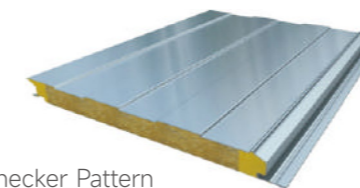
Product Specification

Core Material	Rock Wool / PU	Standard Thickness	30mm
Outside Panel	Color Coated Steel Panel Color Coated Aluminum Panel 0.3-0.6Mm	Standard Width	360mm
Inside Panel	Color Coated Steel Sheet And Aluminum Foil	Continuous Production Length	1.5m-10m

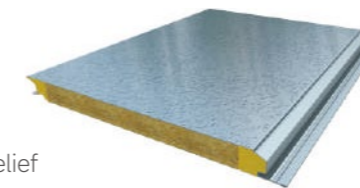
Facing Effect



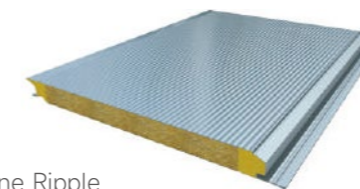
Pure Plane



Checker Pattern



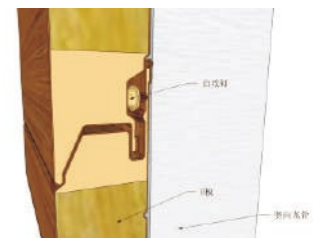
Relief



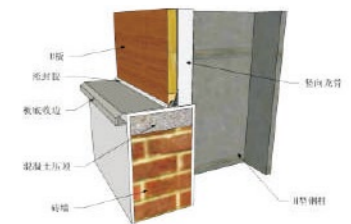
Fine Ripple

Installation Node

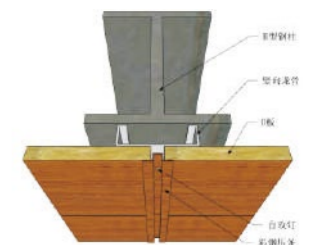
Rabbit



Slab-Bottom



Centre Joint



External Corner



Archi Manual Purification Panel

Product Introduction

The company utilizes advanced high-tech purification board manufacturing technology to customize products based on customer standards. Our range of purification boards exhibits properties like high temperature resistance, flame retardancy, sound absorption, shockproof and insect-proof capabilities, waterproofing, moisture-proofing, light corrosion resistance, odorlessness, and pollution-free qualities. These boards feature metal color-coated plates, aluminum alloy plates, and stainless steel plates as surface materials, with rock wool, hollow glass magnesium, and honeycomb aluminum as the core. They are enclosed by a cold-drawn galvanized steel frame. Both surface and core materials are bonded using high-performance adhesives. The products have a smooth surface, excellent sealing, and are suitable for high-cleanliness environments like medical, food, and laboratory facilities, electronics factories, operating rooms, animal feeding rooms, precision instrument cleanrooms, and warehouses.

Product Features



A-Level Fire Prevention

Using rock wool as the core material can meet the A-level fire protection requirements.



Clean Antibacterial

The surface material can be self-cleaning color coated steel plate, antibacterial color coated steel plate, or stainless steel plate.



High Performance Two-Component Filler Adhesive

Using high-performance two-component purification board specific polyurethane filler adhesive, the product has a bonding strength of $\geq 0.7\text{mPa}$ and a peel performance of $\geq 90\%$.



Lightweight And High-Strength

Each square meter weighs 10-15kg, equivalent to 1/30 of a brick wall, with a flexural bearing capacity of $\geq 0.8\text{KKN/m}^2$.



Primary And Secondary Connectors

The connection is made using a mother and son port insertion method, which is convenient to install and effectively reduces costs



Factory Standardized Production

Using standard manufacturing techniques for processing and manufacturing, the thickness of the side seal keel is $\geq 0.6\text{mm}$, ensuring the overall quality of the product.

Product Series



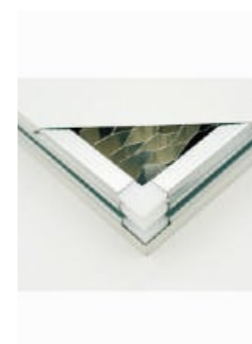
Handmade Rock Wool Purification panel

Panel Thickness	50mm, 75mm, 100mm
Panel Width	980mm, 1180mm, 20mm-1180mm customizable
Panel Length	Customizable, regular $\leq 6000\text{mm}$
Surface Material	0.4mm-0.8mm color coated steel plate, stainless steel plate, aluminum alloy plate
Rock Wool	A-level fire prevention, density $80-120\text{kg/m}^3$
Galvanized Keel	$\geq 0.6\text{mm}$
Feature	A-level fire prevention, good insulation performance, insertion and installation of joints of interlocking devices



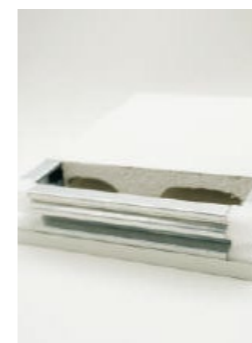
Handmade glass magnesium rock wool purification panel

Panel Thickness	50mm, 75mm, 100mm
Panel Width	980mm, 1180mm, 20mm-1180mm customizable
Panel Length	Customizable, regular $\leq 6000\text{mm}$
Surface Material	0.4mm-0.8mm color coated steel plate, stainless steel plate, aluminum alloy plate
Core Material	Single or double-sided glass magnesium + rock wool
Galvanized Keel	$\geq 0.6\text{mm}$
Feature	Fire resistance limit $\geq 1\text{h}$, high strength, suitable for the upper ceiling of food or pharmaceutical workshops with high cleanliness requirements



Handmade honeycomb purification panel

Panel Thickness	50mm, 75mm, 100mm
Panel Width	980mm, 1180mm, 20mm-1180mm customizable
Panel Length	Customizable, regular $\leq 6000\text{mm}$
Surface Material	0.4mm-0.8mm color coated steel plate, stainless steel plate, aluminum alloy plate
Core Material	0.1mm hexagonal honeycomb made of aluminum foil
Galvanized Keel	$\geq 0.6\text{mm}$
Feature	Lightweight and high-strength, excellent sound insulation effect



Handmade magnesium oxysulfide purification panel

Panel Thickness	50mm, 75mm, 100mm
Panel Width	980mm, 1180mm, 20mm-1180mm customizable
Panel Length	Customizable, regular $\leq 6000\text{mm}$
Surface Material	0.4mm-0.8mm color coated steel plate, stainless steel plate, aluminum alloy plate
Core Material	Hollow magnesium oxysulfide panel
Galvanized Keel	$\geq 0.6\text{mm}$
Feature	Lightweight and high-strength, excellent sound insulation effect

BOUTIQUE CASE

Energy Power



Shimizugawa Power Plant



Anyang Power Plant



Zhongyi Power Plant



Divine Power China Hami Power Plant



Civil Rights Power Plant



Yuzhou Datang Power Plant



China Energy Saving Jintang Waste Power Plant



China Energy Saving Jintang Waste Power Plant



Xinjiang Bole Chuxing Energy



Xinjiang Korla Power Plant



Shenhua Baoqing Power Plant



Xingang Power Plant Of Xinjiang 73 Regiment



Chengdu Wanxing Environmental Protection Power Plant

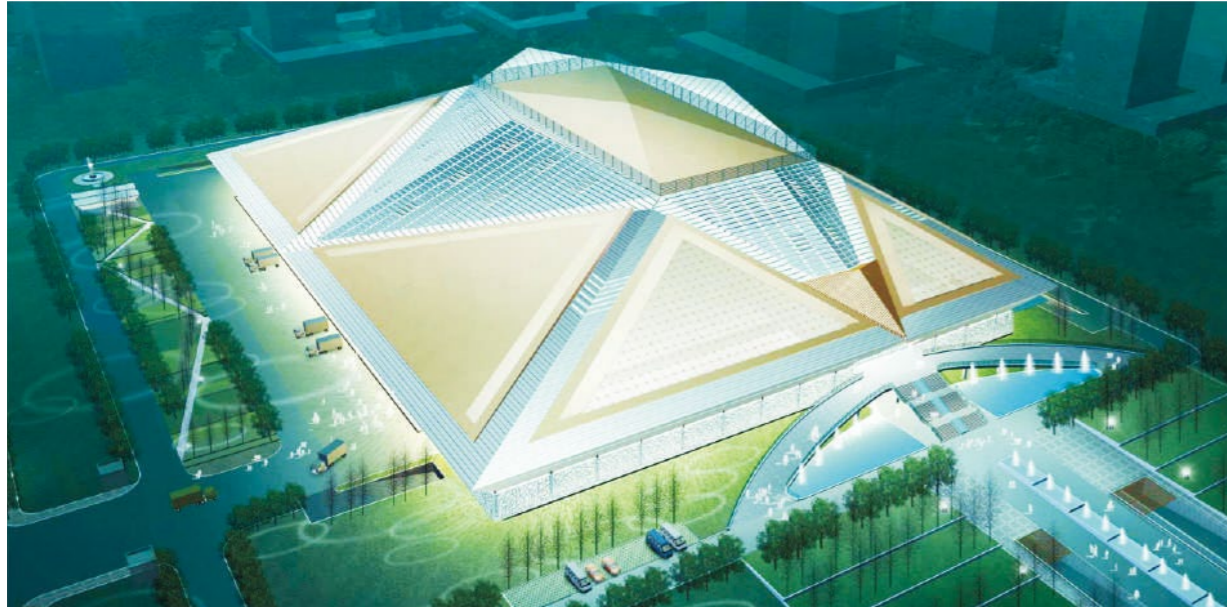


Yuanyanghu Power Plant



China Energy Saving Pingdingshan Garbage Power Plant

Tobacco Industry



Chengdu Tobacco Logistics Center



Bijie Guizhou Tobacco Logistics Center Project



Hunan Changde Tobacco Logistics



Hunan Xiangxi Tobacco Logistics

Biological Medicine



Kelun Pharmaceutical



Zihao Time Pharmaceutical

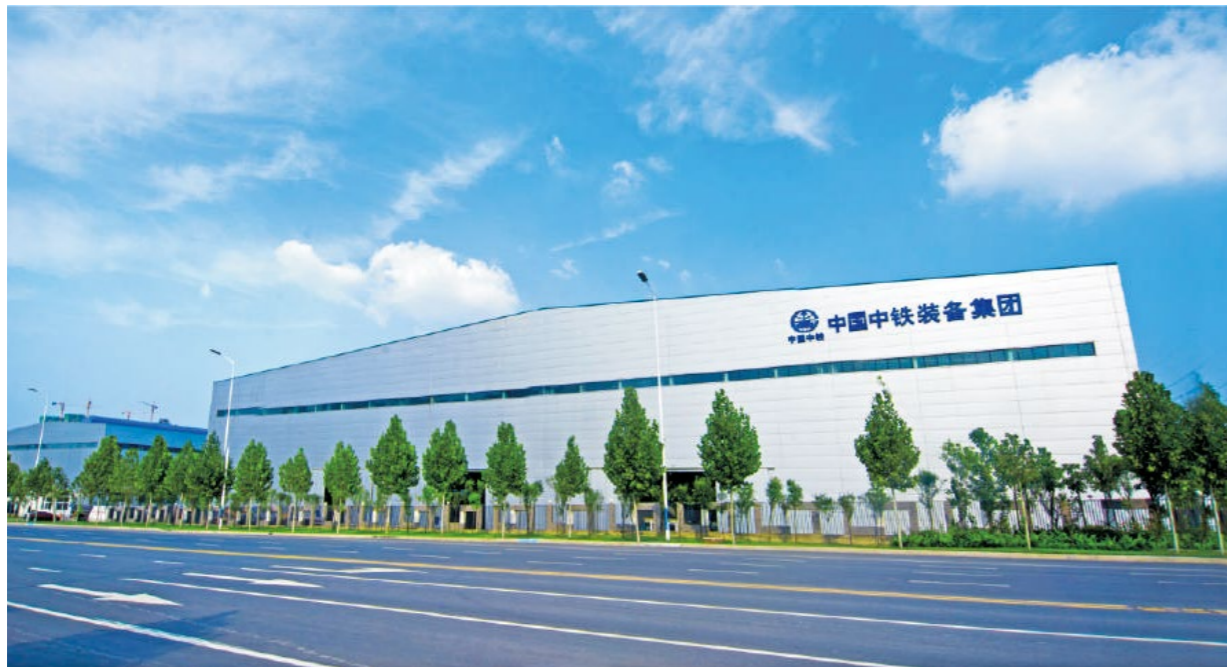


Church Of Bozhou

Mechanized Equipment



The Machinery Group Sanyi



China Railway Equipment Group

Coal Industry



Coal Winning Machine



Zheng Coal Group

Light Industry



Shuanggou Brewery



Ningxia Guyuan



The Yanghe River Distillery

Automobile Industry



Yutong Group



Senyuan Electrical Automobile Industry Park

Industrial Park



Guizhou Kabu



Xinfei Industrial Park



Filtration Industrial Park



Yunnan Honghe Free Trade Zone

Industrial Park



Optical Element



Baoshan Silicon Base 101#, 102#(Night View)



Chengdu Tongwei Solar



Zhejiang Dahua



Siemens



*Shaping the eco-friendly future of
Global Construction*

Henan Archi Innovation Technology Co., Ltd.

www.cnarchi.com